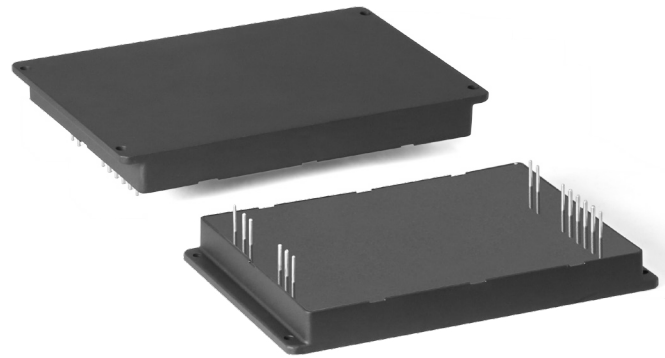


MDV Family

MDV500 Series

Multi-purpose compact DC/DC converters



Description

Compact isolated DC/DC converters of MDV Series for industrial and special purpose applications. Despite the small size (110×84,2×12,85 mm) the maximum output power of modules reach up 500 W and they are able to operate in a wide case operating temperature range (–60...+125°C). These modules might have single galvanically isolated output, remote on/off, short circuit, overcurrent and thermal protection and can operate in parallel and series modes. Without optocouplers in the converter's circuit it can safely operate in conditions of ionizing radiation and high temperature. Power supplies have variable protections from different factors: vibration, dirt, moisture fog and salt fog.

These modules undergo special thermal and limit test including burn-in test with extreme on/off modes.

Compliance

- MIL-STD-810G
- MIL-STD-461F (CE102)
- MIL-STD-704E



Description of MDV Family on the manufacturer's website
eng.aedon.ru/pr-universal.php

Features

- 5 year warranty
- Output current up to 30 A
- 28 VDC (index "V") input compliant with MIL-STD-704E
- Low-profile design (12,85 mm) with cylindrical pin outs
- Case operating temperature –60...+125°C
- 125 °C baseplate operation without derating
- Magnetic feedback without optocouplers
- Short circuit protection, overvoltage, thermal protection
- Remote on/off
- Output voltage adjustment
- Typical efficiency 90% (Uout.=24 VDC)
- Polymer potting sealing

Order registration

+7 473 200 87 80, Global Operations Team

Technical support

techsup@aedon.ru

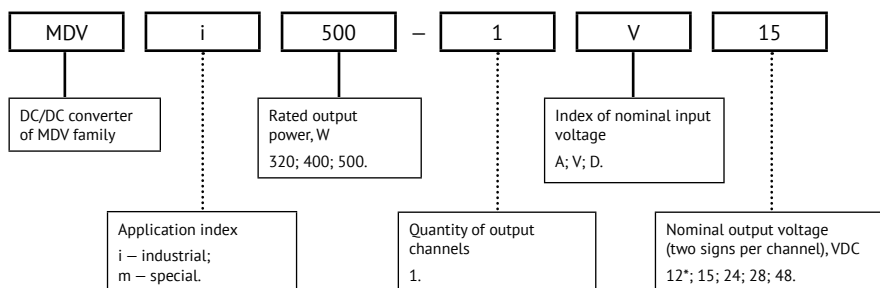
Reliability test

eng.aedon.ru/downloads/documentation/Reliability-Test_ENG.pdf

3D models

www.aedon.ru/content/catalog/docs/205/MDM400V.zip

Ordering information



For more information please contact our Global Operations Team

+7 473 200 87 80
info@npo-enel.ru

*500 W model does not support the output voltage of 12 VDC.

Application index

Parameter	Index "m"	Index "i"
Case operating temperature	-60...+125°C	-40...+85°C
Compliance	MIL-STD-810G	+
	EN60950-1	+
	MIL-STD-461F	CE102
	MIL-STD-704E	28 VDC input (index "V")
Total regulation (Inom 10–100%)	±6%	±4%
Vibration proof	+	-
Moisture proof (Tamb.=25°C)	98%	60%
Dust proof	+	-
Salt fog resistant	+	-
Typical MTBF	2 000 000 hrs	500 000 hrs
Failure rate	<0,05%	<1%
Warranty	5 years	3 year

Rated output power and current

Power	320 W					400 W					500 W				
	12	15	24	28	48	12	15	24	28	48	12	15	24	28	48
Output voltage, VDC	12	15	24	28	48	12	15	24	28	48	12	15	24	28	48
Rated output current, A	26,6	21,3	13,3	11,4	6,6	30	26,6	16,7	14,2	8,3	–	20,8	18,5	17,8	10,4

Other output voltage within range 3...70 VDC is also available upon special request.

Index of nominal input voltage*

Parameter	Index "A"	Index "V"	Index "D"
Nominal input voltage, VDC	12	28	48
Input voltage range, VDC	10,5...18	17...36	36...75
Transient deviation (1 s), VDC	–	17...80	36...84
Typical efficiency for Uout.=24 VDC	83%	86%	90%

* Reflected input ripple current (10–10000 Hz) – 8% Uin. nom

Specifications

All specifications valid for normal climatic conditions (ambient temp. 15...35°C; relative humidity 45...80%; air pressure $8,6 \cdot 10^4 \dots 10,6 \cdot 10^4$ Pa), U_{in} . nom, I_{out} . nom, unless otherwise stated. It is important to note that the information herein is not full. More detailed information (specific requirements, basic connection circuits, operating instructions etc.) can be found on our web-site: eng.aedon.ru

Output specifications

Parameter	Value	
Output voltage adjustment of single channel models	5% U_{out} . nom	
Total regulation	Input voltage variation ($U_{min} \dots U_{max}$)	max $\pm 2\%$
	Load variation (10...100% I_{max})	
Ripple and noise (p-p)	<2% U_{out} . nom	
Maximum capacitive load	12 VDC	1000 μ F
	24 VDC	150 μ F
	48 VDC	70 μ F
Start up time (remote)	max 0,1 s	
Overload protection level*	320 W	<2,8 P_{max}
	400 W	<2,2 P_{max}
	500 W	<1,8 P_{max}
Short circuit protection*	hiccup auto recovery	
Overvoltage protection	1,5 U_{nom}	

* Parameters are stated for the information purposes and could not be used at long term work, exciding maximum output current, at work outside of a range of operating temperatures.

General specifications

Parameter	Value	
Case temperature	Operating (natural convection) – power derating (natural convection) – without power derating with heatsink	–60...+125°C see power derating diagram (dashed, dash-dotted curve) see power derating diagram (solid curve)
	Storage	–60...+125°C
Switching frequency	130–150 kHz	
Isolation capacitance	input/output	1500 pF
Isolation voltage (60 s)	input/output, input/case, output/case	500 VAC
Isolation resistance @ 500 VDC	input/output, input/case, output/case	20 MOhm min
Thermal impedance	3°C/W	
Thermal protection level	118...125°C, clamp, auto recovery	
Remote on/off	Off.: connection of pins "ON" and "–IN", $I \leq 5$ mA	

Specifications (cont.)

Physical specifications

Parameter	Value
Case material	aluminium
Potting	epoxy polimer
Pin material	phosphor bronze, SnP8 plated
Weight	max 290 g
Soldering temperature	260°C @ 5 s

Design topology

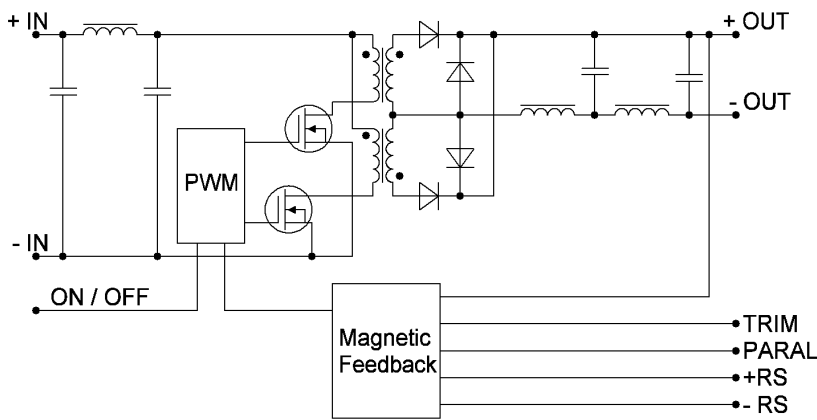


Figure 1. Design topology.

Service functions

Typical connection

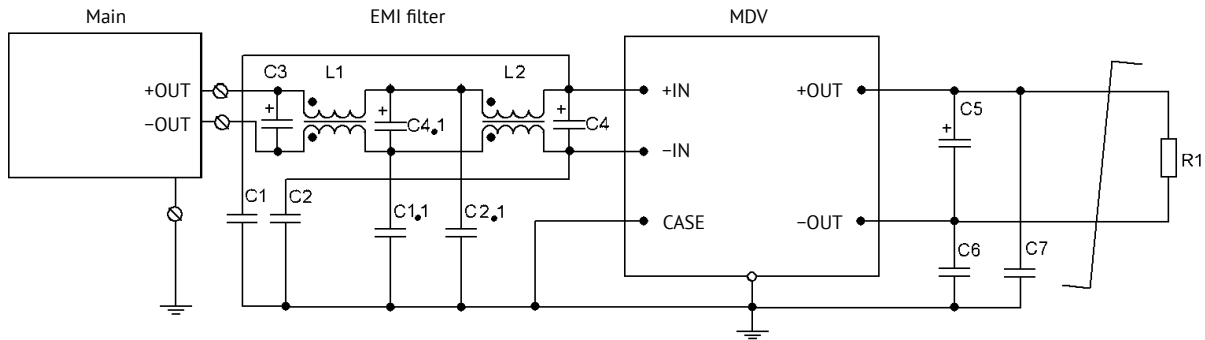


Figure 2. Design topology with filtration unit.

C1, C2	ceramic capacitor		3900–4700 pF 500 VDC min
C1.1, C2.1	ceramic capacitor		4400–4700 pF 500 VDC min
C6, C7	ceramic capacitor		2200–4700 pF 500 VDC min
C3, C4, C4.1	tantalum capacitor	Input voltage	12 VDC 680–1500 uF 28 VDC 220–470 uF 48 VDC 47–100 uF
C5	tantalum capacitor	Output voltage	12 VDC 250 uF 24 VDC 38 uF 48 VDC 18 uF
L1	common mode choke		900 uH
L2	common mode choke		3 mH

Service functions (cont.)

Remote control

Function of remote control by a signal allows to control the unit's operation using mechanical relay or electric switch of "open collector" type.

The unit should be powered off by connecting "ON" output to "-IN" output. The switch can carry current of up to 5 mA, the max voltage drop on the switch should be less than 1,1 V.

The unit is powered on by disconnecting the switch within the time less then 5 μ s. Being disconnected the switch is applied by approximately 5 V, allowable current leakage through the switch should not be over 50 μ A.

To arrange remote power off/on of several units simultaneously it is not allowed to use additional elements in the circuit to connect outputs "ON" and "-IN" and a switch.

If the function of remote power off/on is not used, "ON" output is allowed to be left unconnected.

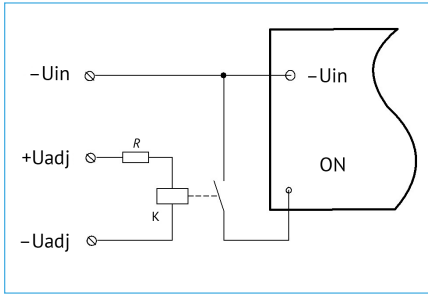


Figure 3 (a). Layout of mechanical relay control.

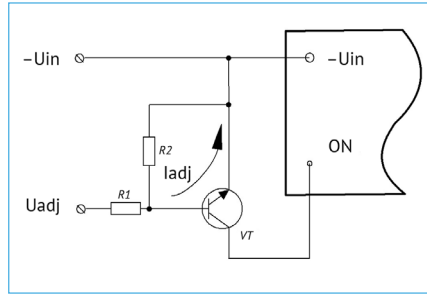


Figure 3 (b). Layout of bipolar transistor control.

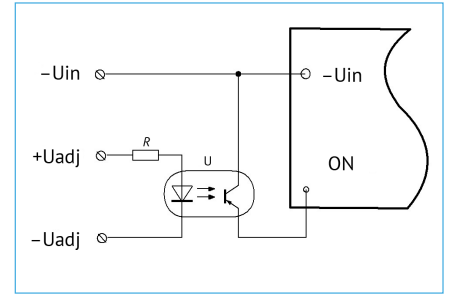


Figure 3 (c). Layout of optocoupler control.

Adjustment

Adjustment of output voltage of a power supply unit within the range of at least $\pm 5\%$ can be done by connecting "TRIM" output (if available) through "-OUT" output to increase output voltage, or through "+OUT" output to decrease the output voltage.

In case of using variable resistor Rvar and outside resistors (R1, R2) it is possible to fulfill the adjustment both to increase and decrease the output voltage.

If you need to control the output voltage of a power supply unit by a signal from external source of current or voltage, e.g. in micro-controller automated control systems using DAC, the external current or voltage signal should be supplied to the adjustment output relating to "-OUT" output, as shown in the drawings (b) and (c).

Calculation formula of nominal values of circuit elements (a), current (b) and voltage (c) can be found in Technical Guides available on www.eng.aedon.ru.

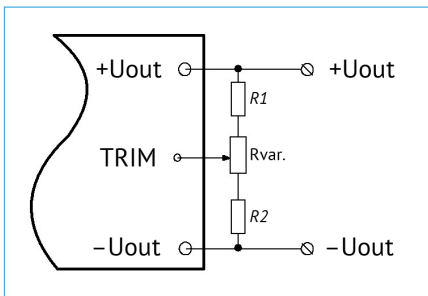


Figure 4 (a).

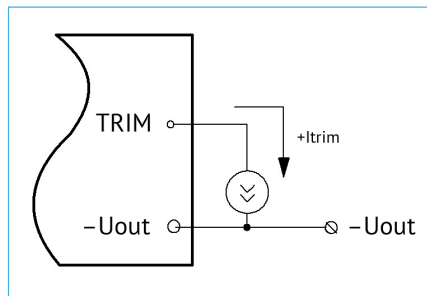


Figure 4 (b).

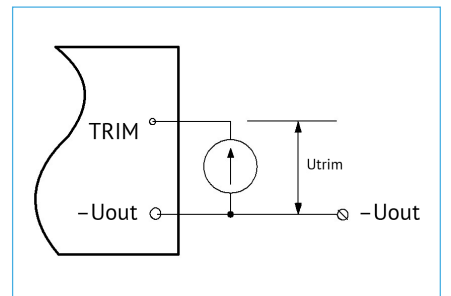


Figure 4 (c).

Efficiency

VS load

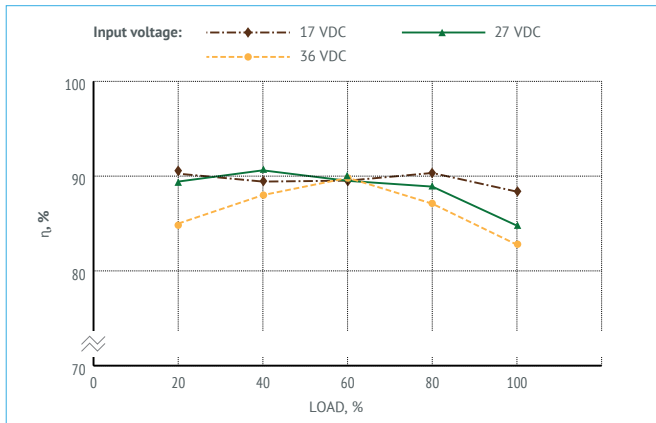


Figure 5. Efficiency of MDVx400-1V27.

Power derating

VS ambient temperature and baseplate temperature

The PSU is able to operate with 100% load within the complete range of case operating temperature (-60...+125 °C). On condition the case temperature is kept from -60°C to 125 °C the PSU will operate without derating regardless of the ambient temperature. Thermal Management section of the Application Notes shows the resulting heatsink area, as well as baseplate-vs-ambient thermal resistance, the min thickness of the heatsink, and the max PSU output power without heatsink.

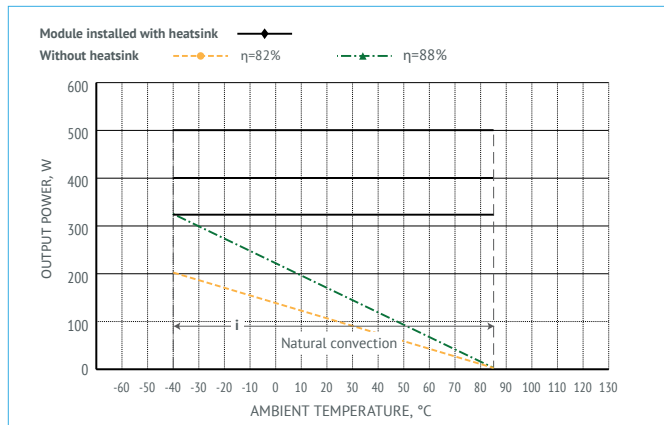


Figure 6 (a). Power derating of MDVi500-xxx.

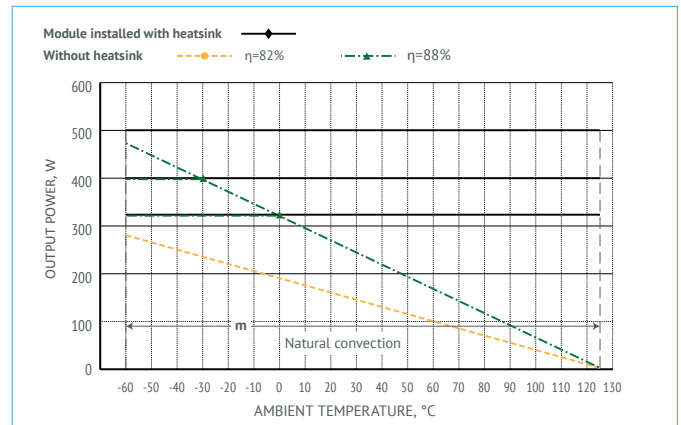


Figure 6 (b). Power derating of MDVm500-xxx.

Oscillograph charts of MDVx500-xxx

Testing conditions $U_{in}=28$ VDC, $I_{out}=15.6$ A, $T_{amb}=25^{\circ}\text{C}$, $U_{out}=32$ VDC, $C_{out}=100$ μF

The database of regulated parameters of the manufactured products is available. Pls. contact your personal manager or customer support service to get necessary information.

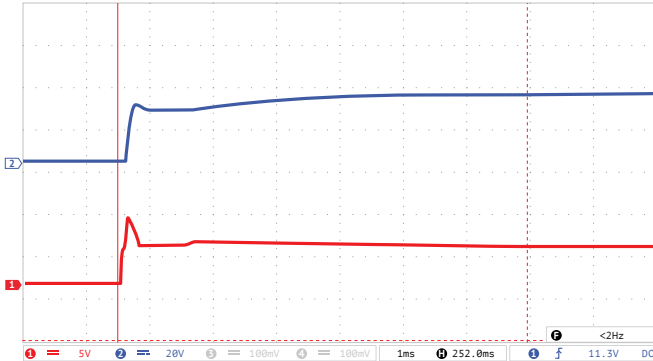


Figure 7 (a). Oscillograph chart of setting output voltage after supplying remote control signal to ON-output.

Ray 1 (red) – output voltage. Scale 5 V/div.

Ray 2 (blue) – voltage at ON-output. Scale 20 V/div.

Time scale $t=1$ ms/div.

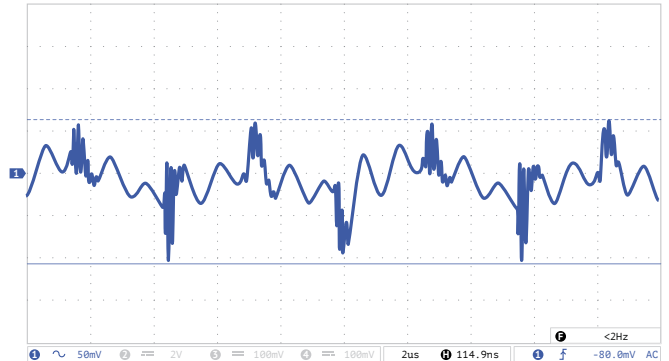


Figure 7 (c). Oscillograph chart of output voltage ripple.

Ray 1 (blue) – ripple of output voltage. Scale 50 mV/div.

Time scale 2 us/div.

Measuring technique: see Electrical Test Screen.

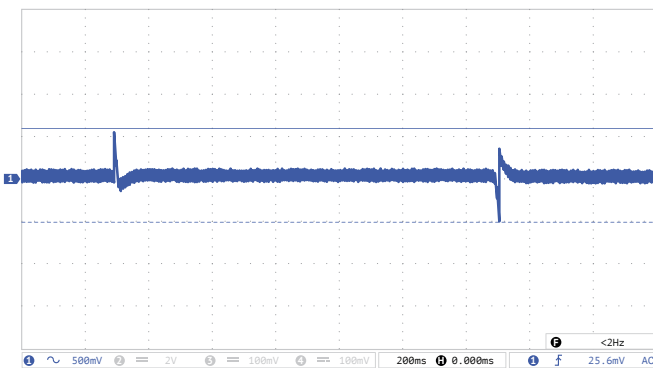


Figure 7 (d). Oscillograph chart of voltage transient deviation during load “drop/rise”.

Ray 1 (blue) – output voltage. Scale 500 mV/div.

Time scale $t=200$ ms/div.

Modes:

- “drop” output current variation (10...100%) I_{nom} ;
- “rise” output current variation (10...100%) I_{nom} ;
- build-up time 500 us.

Noise spectrogram

Testing according to MIL-STD-461F CE102. (Tcase=25°C, Vin.=+12 V, full load, unless otherwise specified)

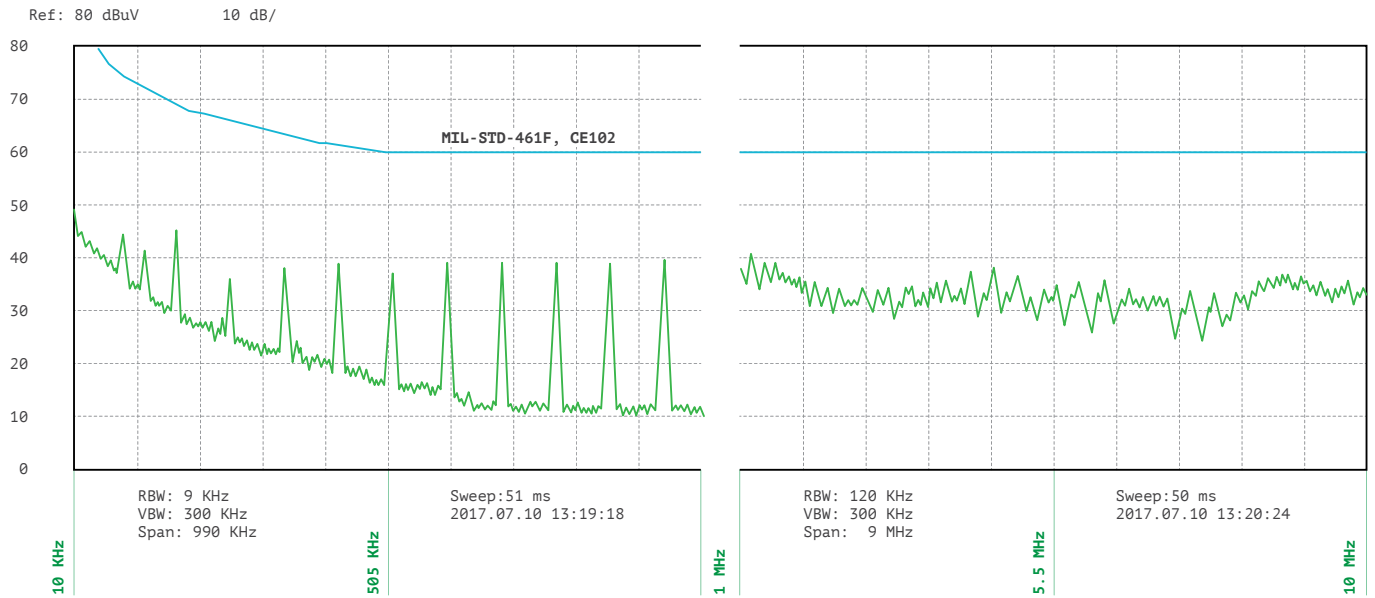


Figure 8. Spectrogram of MDV320-1V28 with typical connection diagram.



eng.aedon.ru

mail@aedon.ru

AEDON, LLC is the leading Russian developer and manufacturer of DC/DC converters and power supply systems for critical applications.

Druzhnikov str. 1, Voronezh
394026, Russia
+7 473 200-87-80

1, bld. 2, BC "W Plaza 1",
office A403, Moscow
101000, Russia
+7 499 372-50-10

This datasheet is valid for the following units: MDVi320-1A12; MDVi320-1A15; MDVi320-1A24; MDVi320-1A28; MDVi320-1A48; MDVi320-1V12; MDVi320-1V15; MDVi320-1V24; MDVi320-1V28; MDVi320-1V48; MDVi320-1D12; MDVi320-1D15; MDVi320-1D24; MDVi320-1D28; MDVi320-1D48; MDVi400-1A12; MDVi400-1A15; MDVi400-1A24; MDVi400-1A28; MDVi400-1A48; MDVi400-1V12; MDVi400-1V15; MDVi400-1V24; MDVi400-1V28; MDVi400-1V48; MDVi400-1D12; MDVi400-1D15; MDVi400-1D24; MDVi400-1D28; MDVi400-1D48; MDVi500-1A15; MDVi500-1A24; MDVi500-1A28; MDVi500-1A48; MDVi500-1V15; MDVi500-1V24; MDVi500-1V28; MDVi500-1V48; MDVi500-1D15; MDVi500-1D24; MDVi500-1D28; MDVi500-1D48; MDVm320-1A12; MDVm320-1A15; MDVm320-1A24; MDVm320-1A28; MDVm320-1A48; MDVm320-1V12; MDVm320-1V15; MDVm320-1V24; MDVm320-1V28; MDVm320-1V48; MDVm320-1D12; MDVm320-1D15; MDVm320-1D24; MDVm320-1D28; MDVm320-1D48; MDVm400-1A12; MDVm400-1A15; MDVm400-1A24; MDVm400-1A28; MDVm400-1A48; MDVm400-1V12; MDVm400-1V15; MDVm400-1V24; MDVm400-1V28; MDVm400-1V48; MDVm400-1D12; MDVm400-1D15; MDVm400-1D24; MDVm400-1D28; MDVm400-1D48; MDVm500-1A15; MDVm500-1A24; MDVm500-1A28; MDVm500-1A48; MDVm500-1V15; MDVm500-1V24; MDVm500-1V28; MDVm500-1V48; MDVm500-1D15; MDVm500-1D24; MDVm500-1D28; MDVm500-1D48.